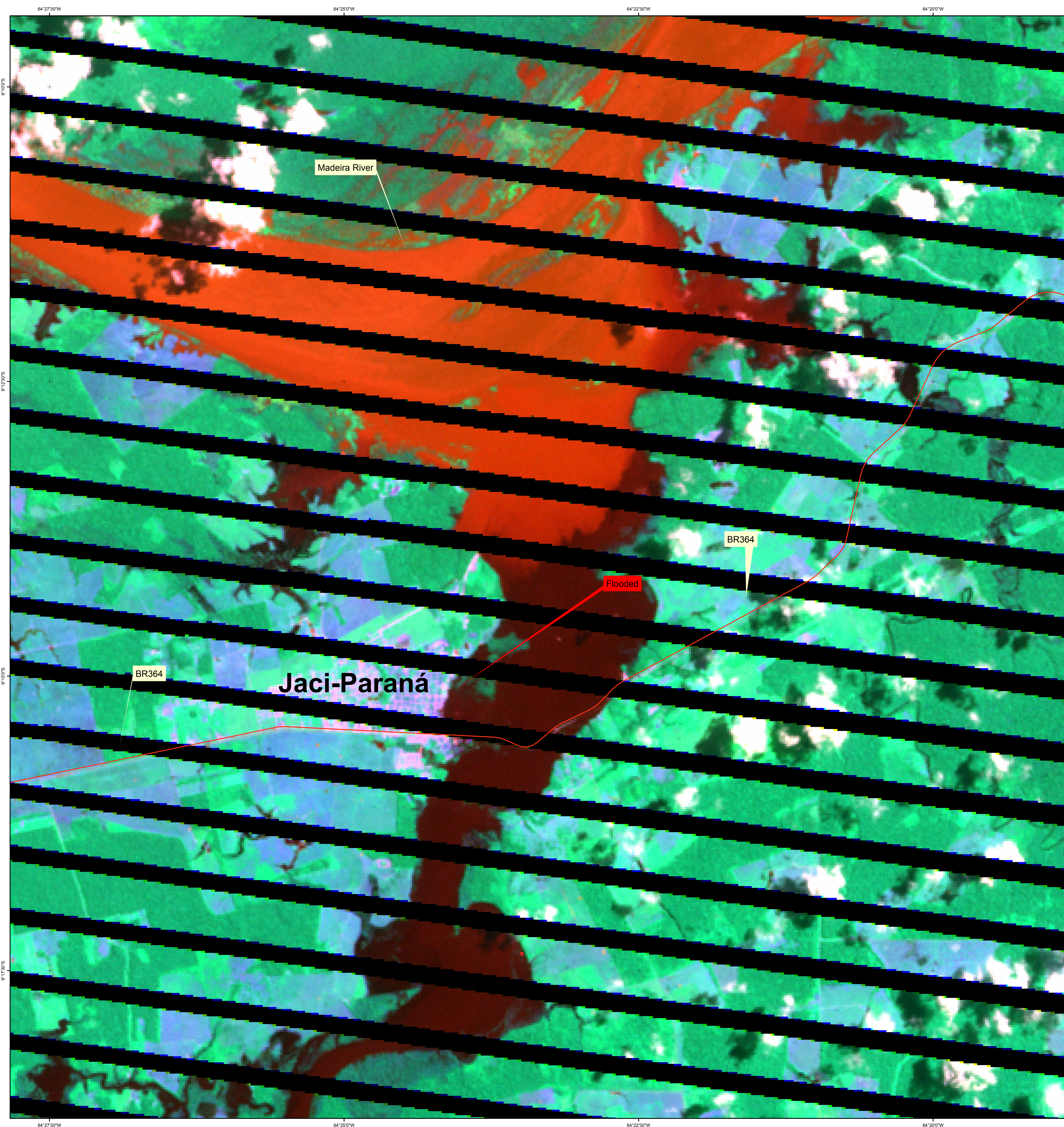
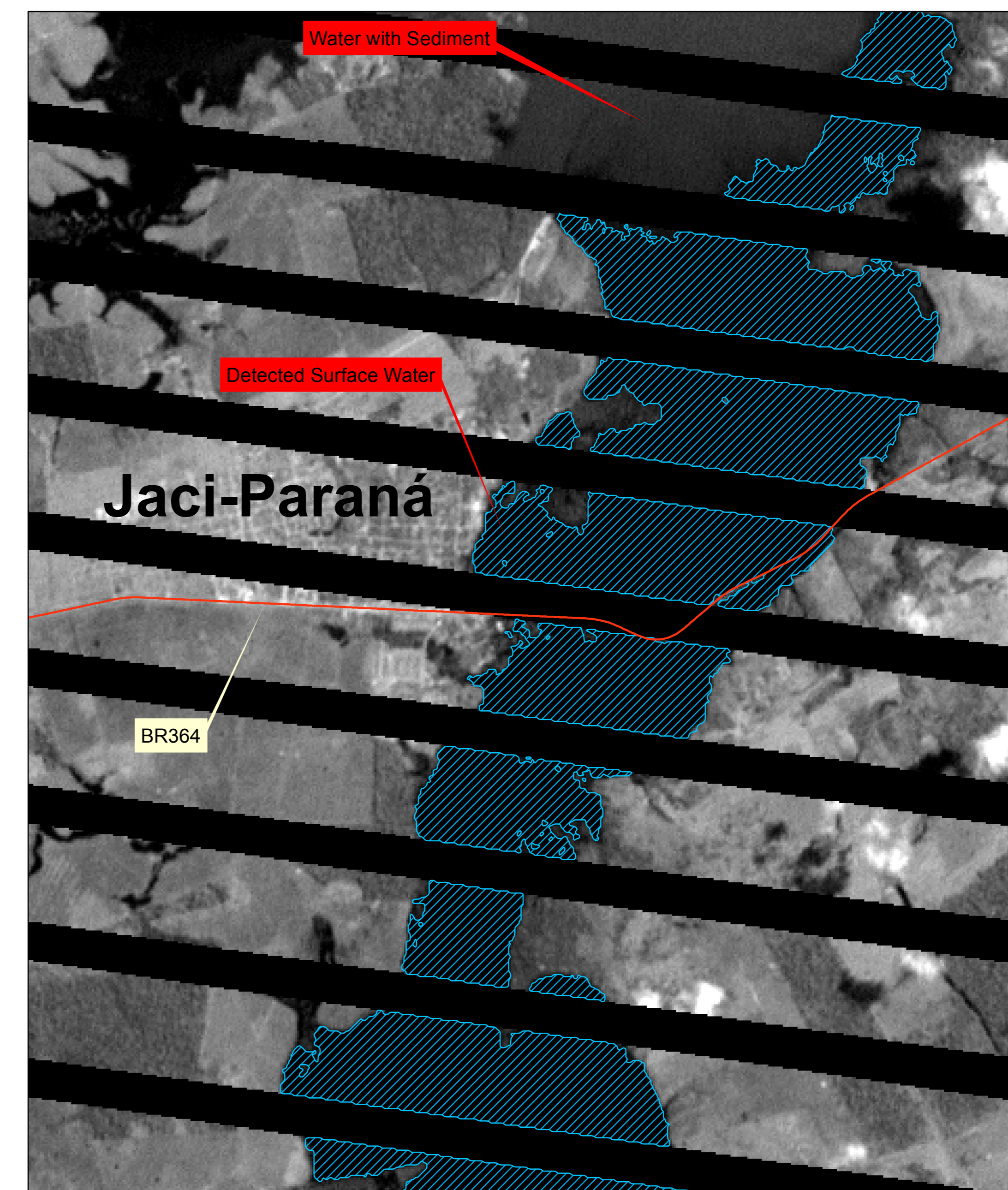


# BRAZIL - FLOOD - Jaci-Paraná / RO - APRIL/2014

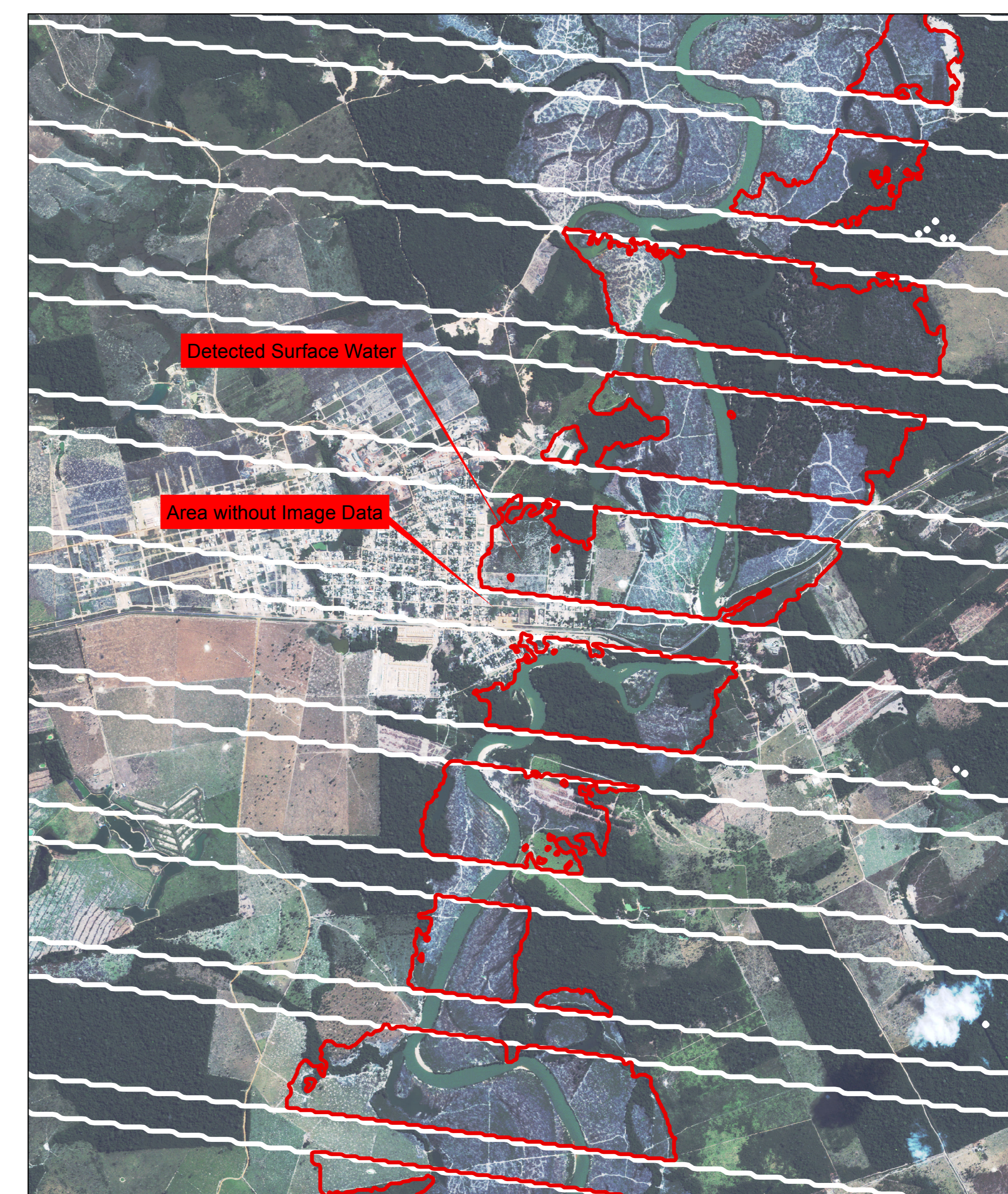
LANDSAT 7 - 07/ABR/2014 - Bandas 3, 4 e 5



LANDSAT 7 - 07/APR/2014 - Band 8



Ikonos 2 - 16/JUL/2011



Source: USGS - LANDSAT-7  
 Acquired: 07/04/2014  
 Resolution: 15 m (Band 8); 30 m (Bands 4, 5 and 6)  
 Imagem Pré-Evento  
 Source: USGS - Ikonos 2  
 Acquired: 16/07/2011  
 Composition: 3R-2G-1B  
 Copyright: 2014 DigitalGlobe

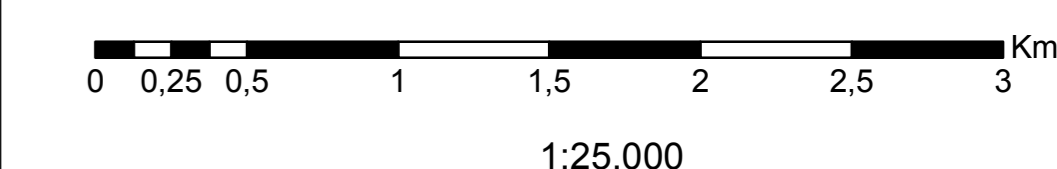
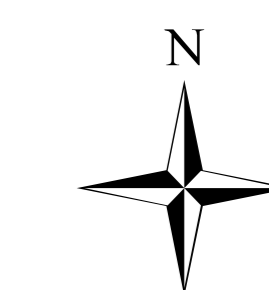
Product ID: generated by INPE  
 (National Institute for Space Research),  
 through the agreement International Charter  
 "Space and Major Disasters"  
 Charter CALL ID 483, with images provided by USGS.

### Legenda

- Detected Surface Water
- Detected Surface Water
- Area without Image Data

Surface Water detected through digital image processing using SPRING: Band 8 (converted to 8 bits) slicing with values between 20 and 35 being water.  
 Water with sediment wasnot sliced.

This product was generated using digital techniques and requires field verification.  
 There is no precision mapping in this product.



Geographical Projection: Lat/Long WGS84

