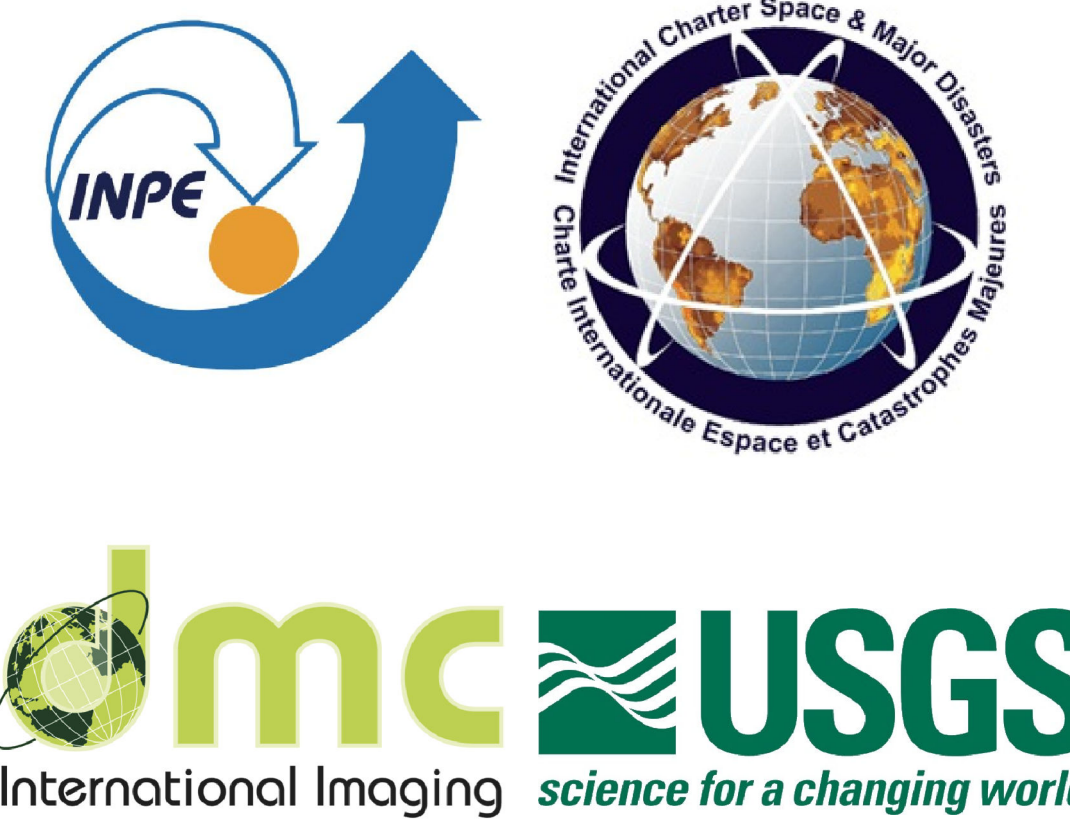


BRAZIL - FLOOD - Iguaçu River - Paraná / PR - JUNE/2014



Event Image
 Source: DMC International Imaging Ltd
 Acquired: 22/06/2014
 Satellite: UK-DMC-2 / Resolution: 22m
 Image Fusion by Principal Components
 Resolution: 0.5 m
 Copyright: 2014 DMCii, data acquired by the UK-DMC-2 satellite, part of the DMC Consortium and licensed by DMC International Imaging Limited of the United Kingdom.

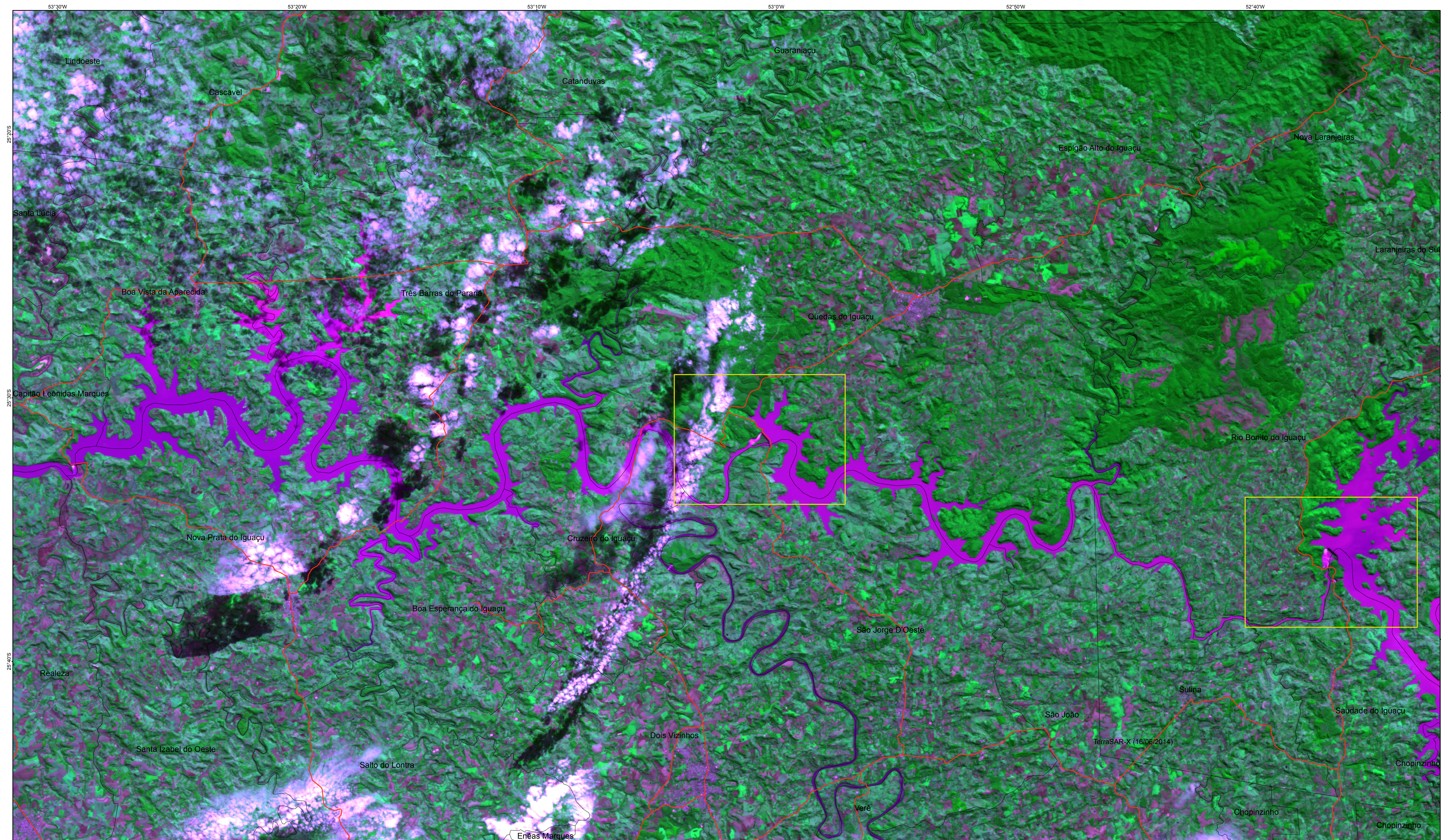
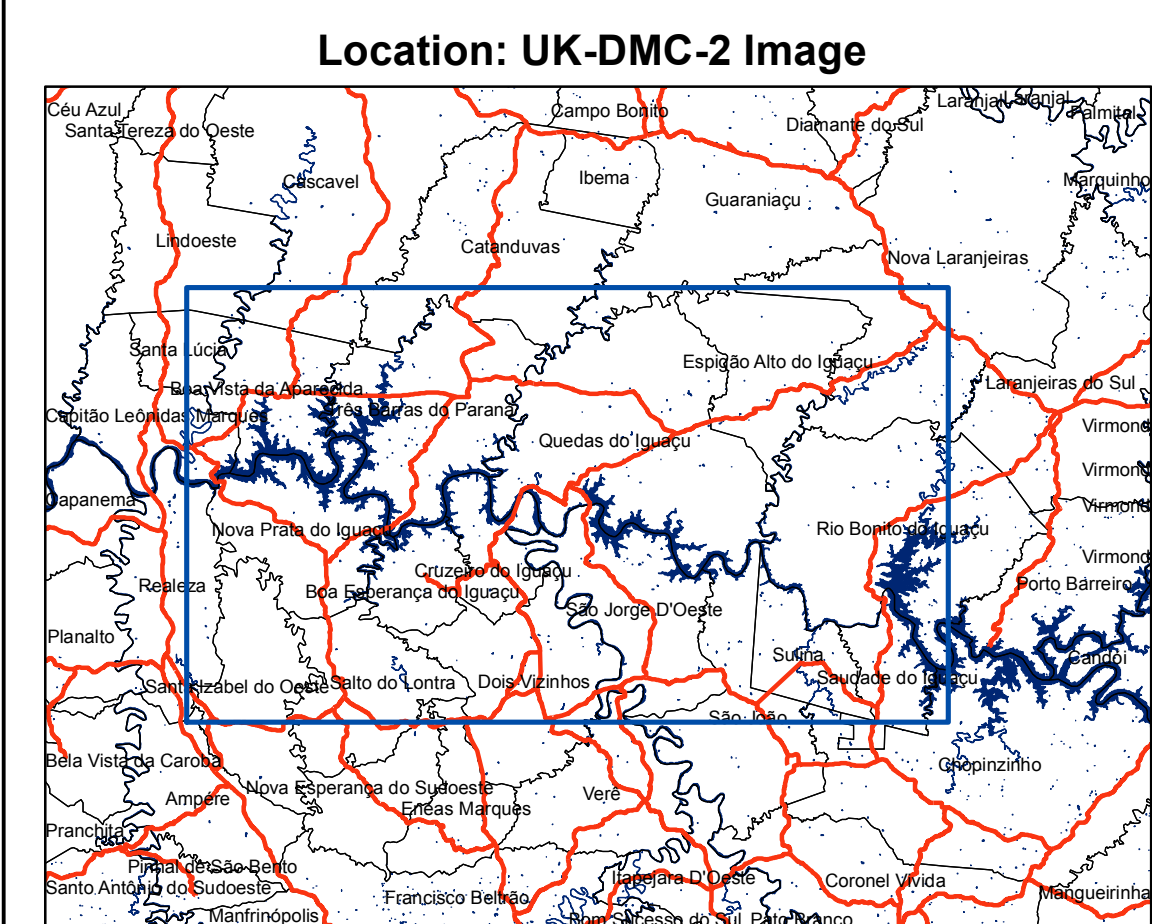
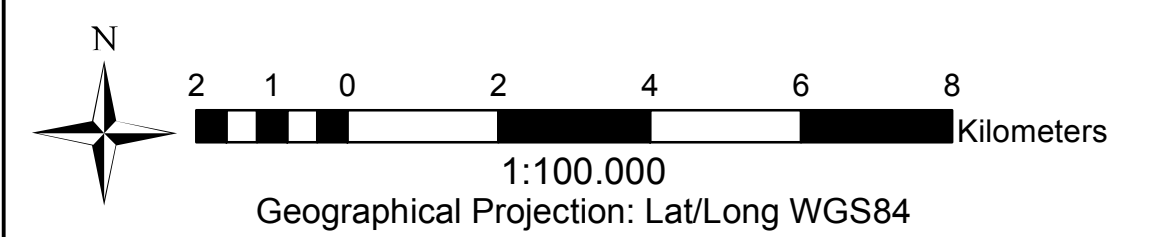
Pre-event Image
 Source: USGS - LANDSAT-8
 Acquisition: 09/06/2013
 Resolution: 30 m
 Courtesy of the U.S. Geological Survey

Product ID: generated by INPE (National Institute for Space Research), through the agreement International Charter "Space and Major Disasters" Charter CALL ID 492, with images provided by DMC International Imaging Ltd and U.S. Geological Survey

Legend

- Highways - DER-PR (2011)
- Municipalities (Paraná)
- RGB**
- Red: Band_1
- Green: Band_2
- Blue: Band_3
- RGB**
- Red: Band_1
- Green: Band_2
- Blue: Band_3

This product was generated using digital techniques and requires field verification. There is no precision mapping in this product.



Salto Osório Dam

Salto Santiago Dam

