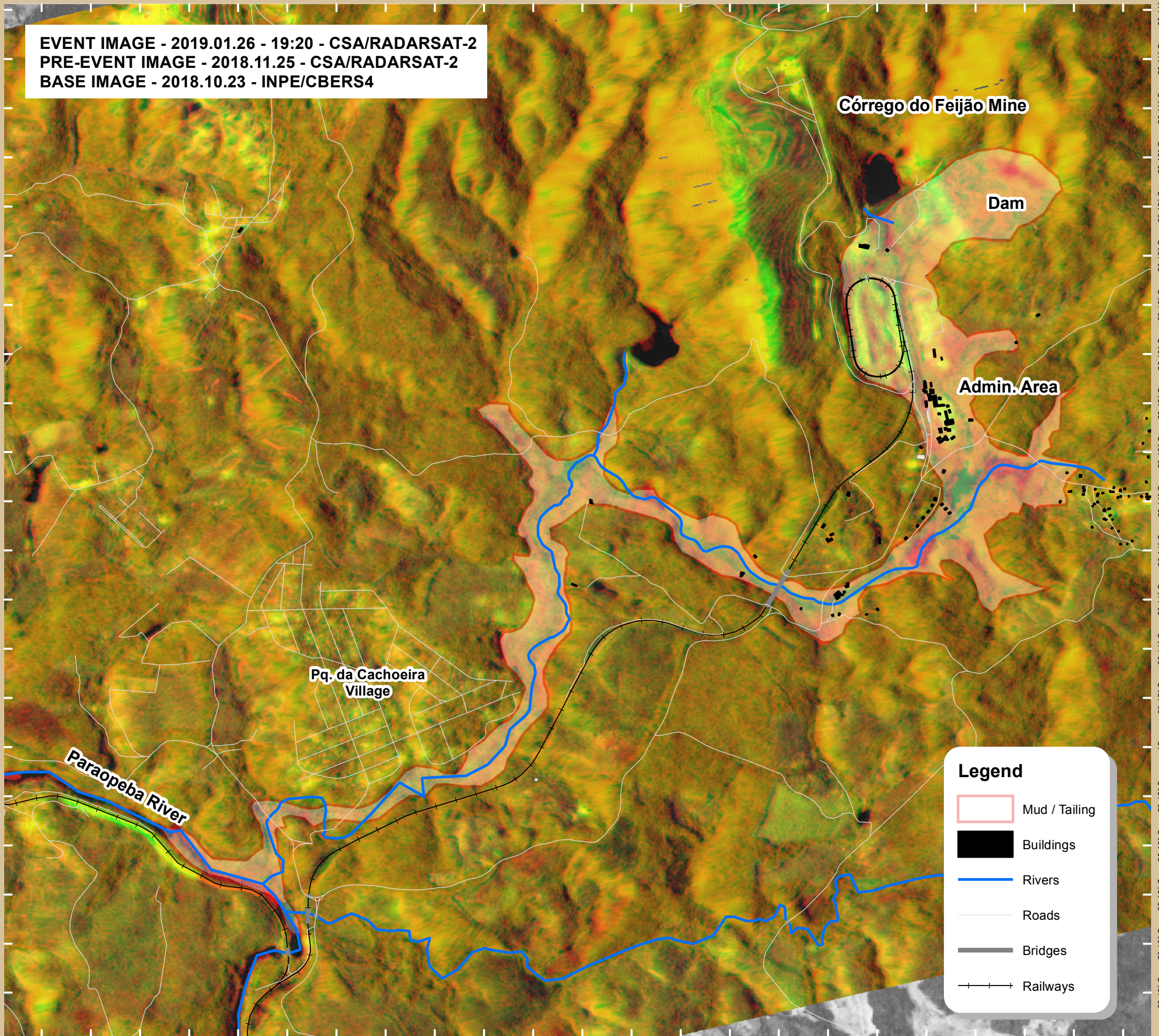




Dam Collapse in Brumadinho/MG - Brazil Charter Call 686

EVENT IMAGE - 2019.01.26 - 19:20 - CSA/RADARSAT-2
PRE-EVENT IMAGE - 2018.11.25 - CSA/RADARSAT-2
BASE IMAGE - 2018.10.23 - INPE/CBERS4



Data Sources

Event:
CSA / RADARSAT-2
Instrument: SAR_RAD_2
Acquired on 2019.01.26
Acquisition mode: Ultrafine, U71 - Polarization HH

Pre-Event:
CSA / RADARSAT-2
Instrument: SAR_RAD_2
Acquired on 2018.11.25
Acquisition mode: Multi-Look Fine, MF21 - Polarization HH

Base Image:
INPE / CBERS-4
Instrument: PAN - Resolution 10m
Acquired on 2018.10.23

Land Features:
OpenStreetMap

Disclaimer: Product generated by CENAD (National Center of Risk and Disaster Management – Brazil), through the agreement International Charter “Space and Major Disasters”, Call ID 686, with images provided by CSA / RADARSAT-2 and INPE / CBERS-4. RADARSAT-2 Data and Products © MDA Geospatial Services Inc.(2019) - All Rights Reserved. RADARSAT is an official trademark of the Canadian Space Agency. Land Features: © OpenStreetMap contributors. This product was generated using digital techniques and requires field verification. There is no precision mapping in this product.