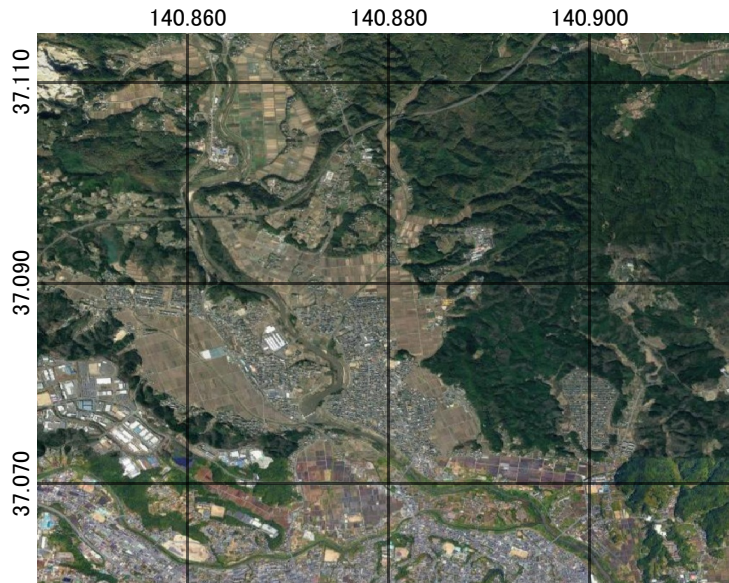
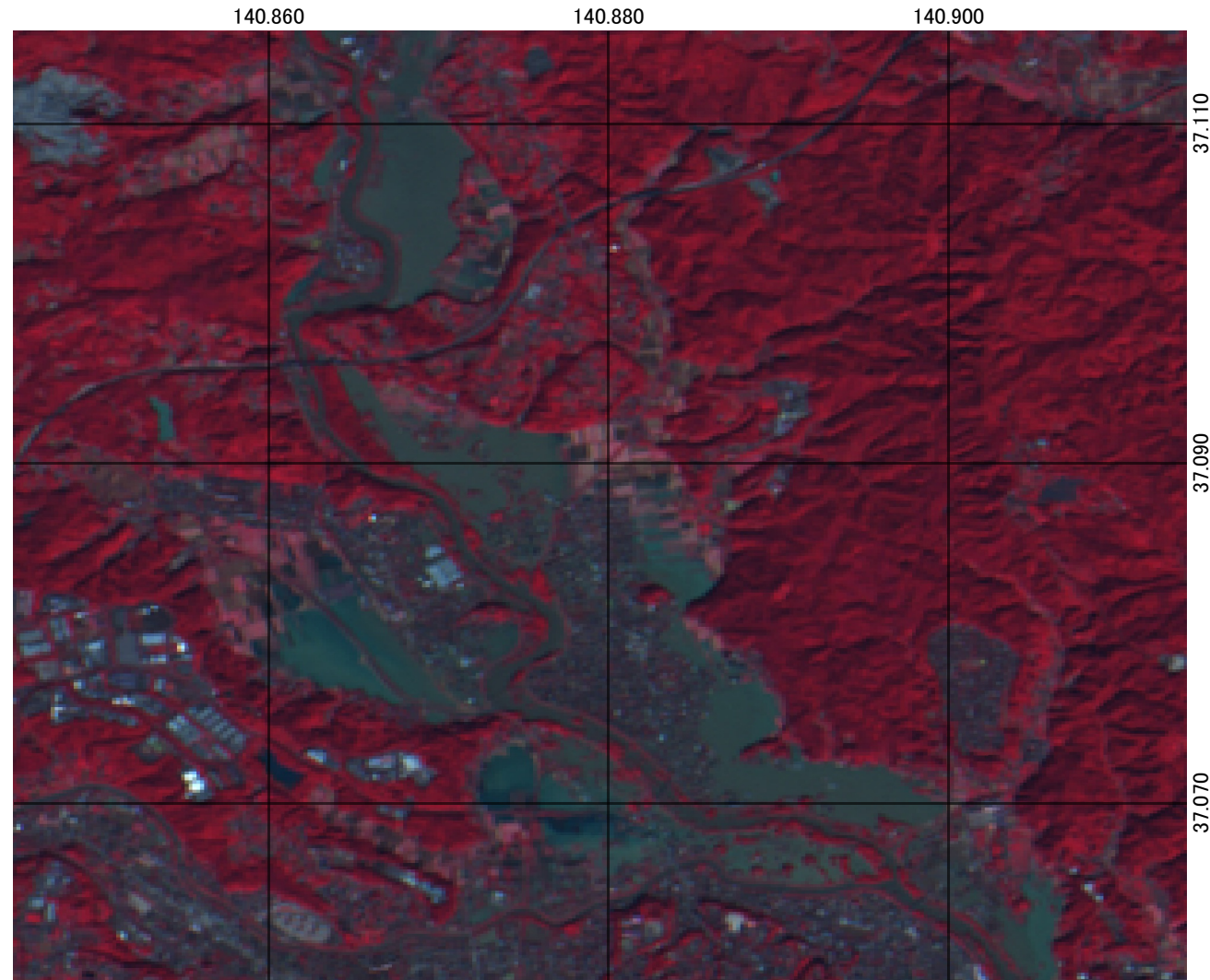


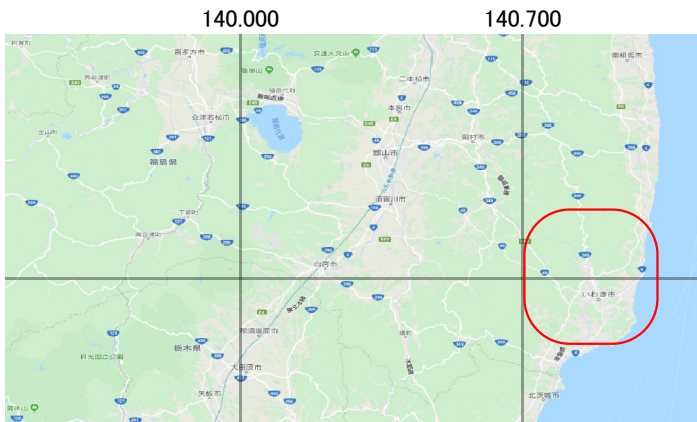
Possible flooded areas using CBERS-4 in Iwaki-shi, Hukushima prefecture, Japan



Before disaster(Google satellite)




After disaster(CBERS-4)



Google map



Map information

 Possible flood areas

Data source

Image: CBERS-4
Image date: 2019-10-13

Image copyright: Instituto Nacional de Pesquisas Espaciais

