

-45.655

-45.632

-45.609

-45.586

# Landslides and debris on the Rio-Santos federal highway (BR-101)

✕ Affected areas (14 points)

São Sebastião-SP  
(BR-101 - Trecho de Boiçucanga)

Charter Activation 803

2023-02-28

Landslides and debris

Post-disaster image:

HIRI/Pleiades 1A-25.02.2023

SIRGAS 2000

-23.760

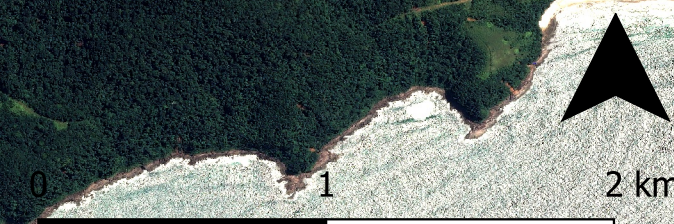
-23.760

-23.778

-23.778

-23.796

-23.796



-45.655

-45.632

-45.609

-45.586