

Flooded roads, buildings and bridge, PLEIADES-1A image, 2023-04-06

FLOODED BRIDGES
3

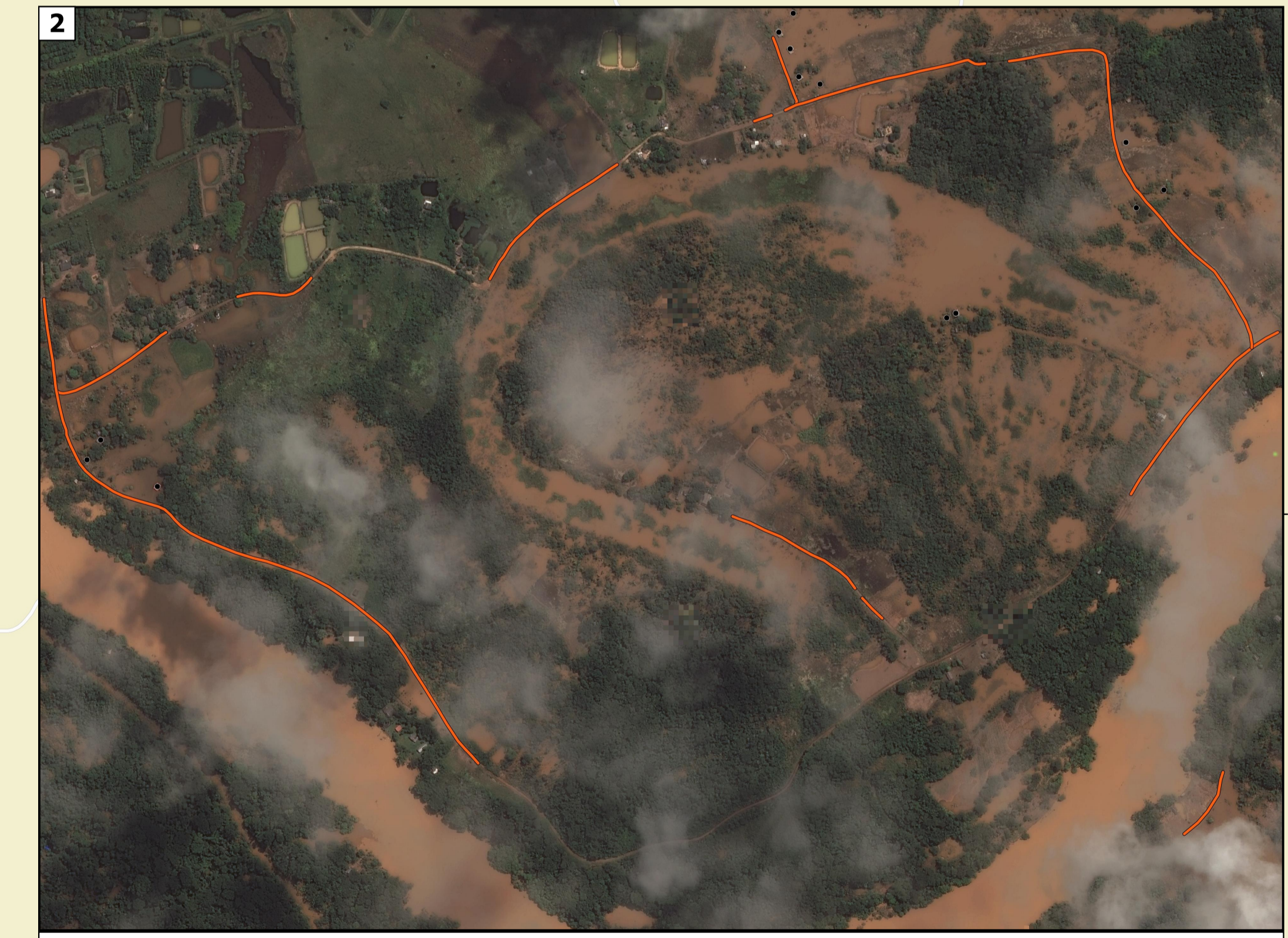
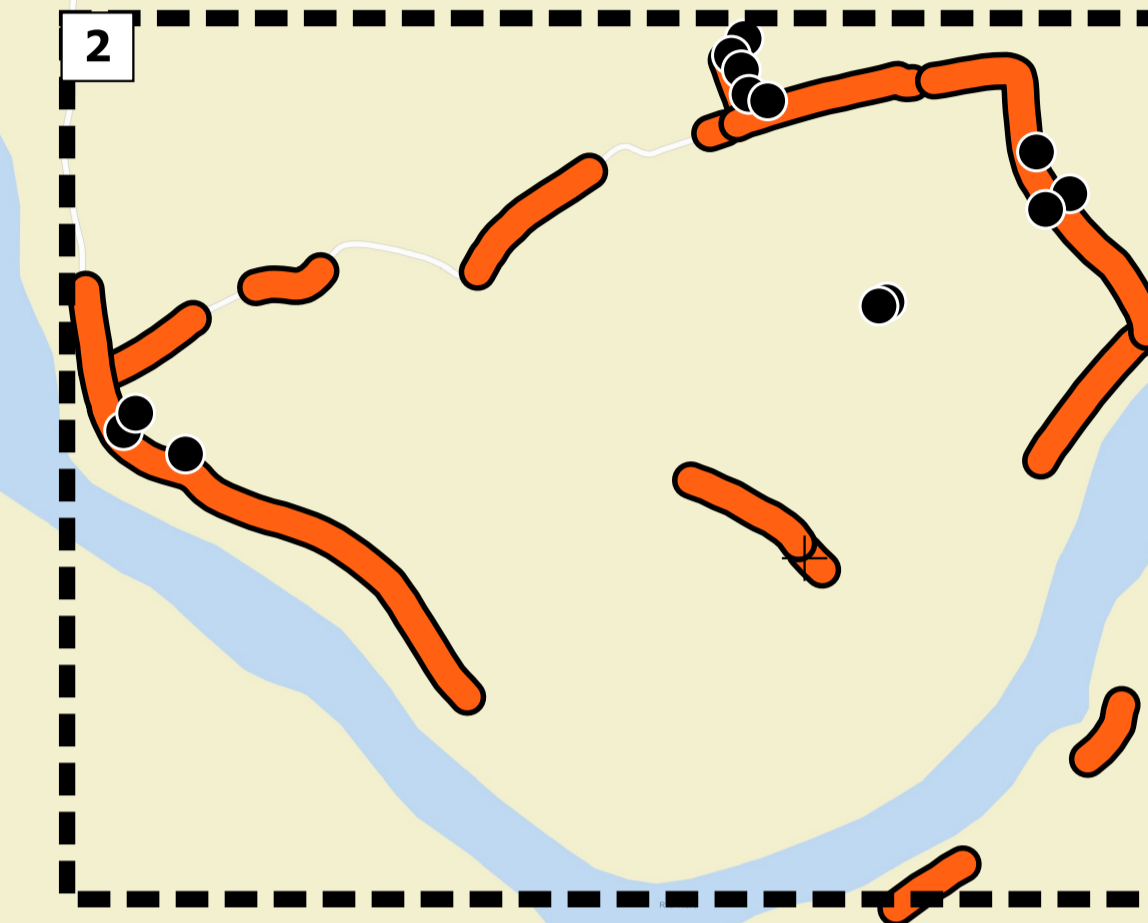
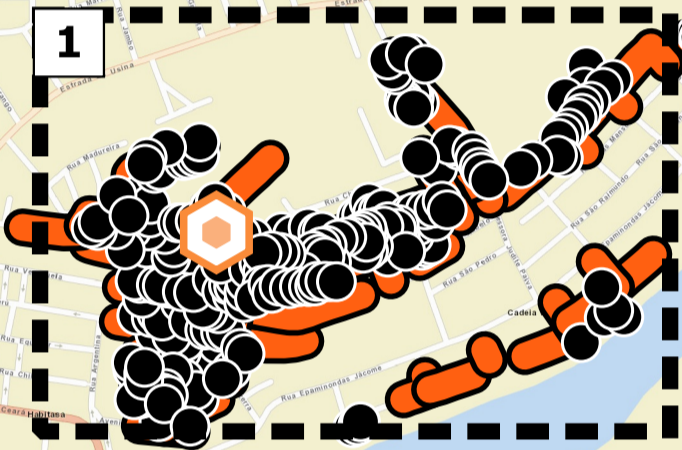
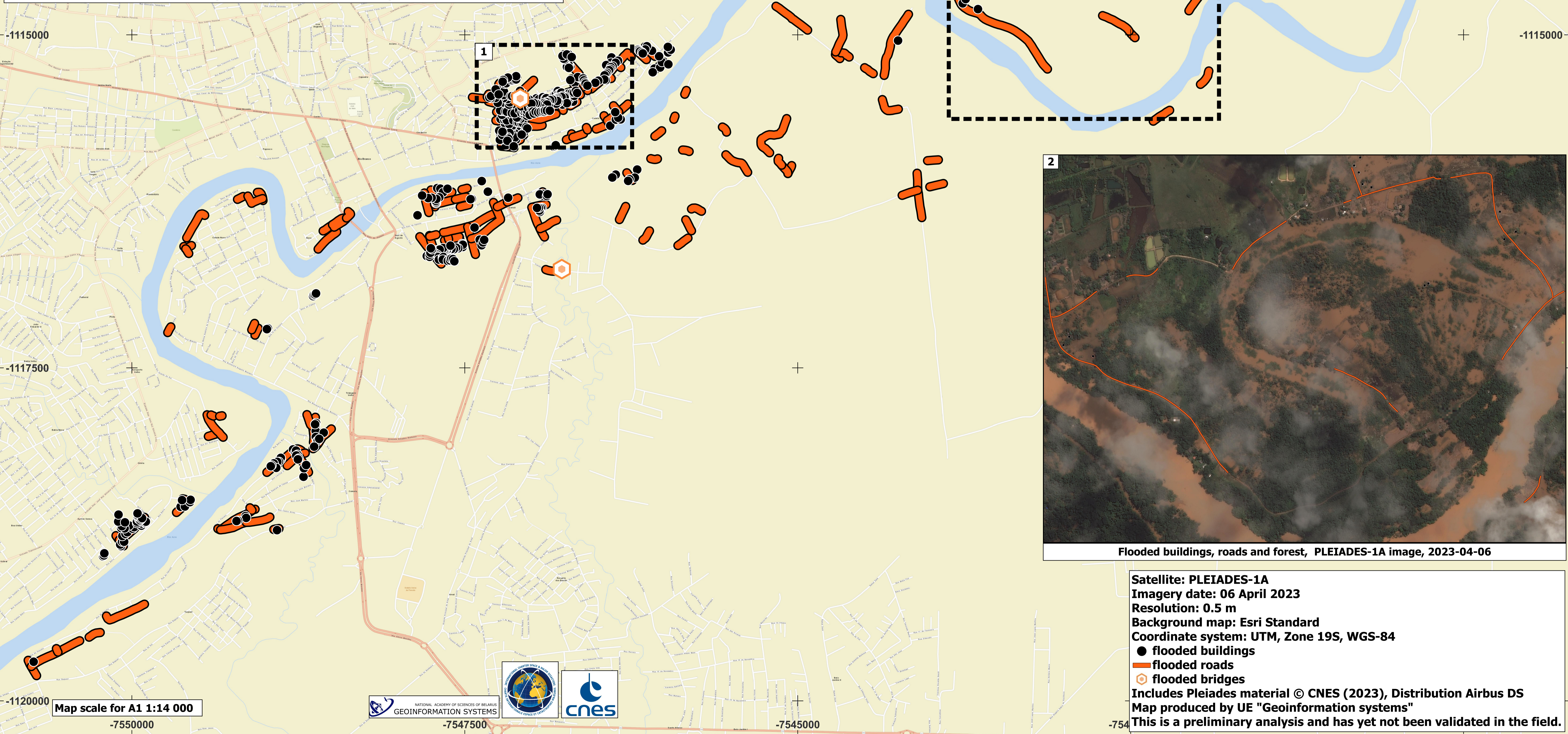
FLOODED ROADS
23 km

FLOODED BUILDINGS
473

FLOOD SITUATION IN BRAZIL
CALL 937, Rio Branco, AOI ID: 1
As observed by PLEIADES-1A image on 06 April 2023

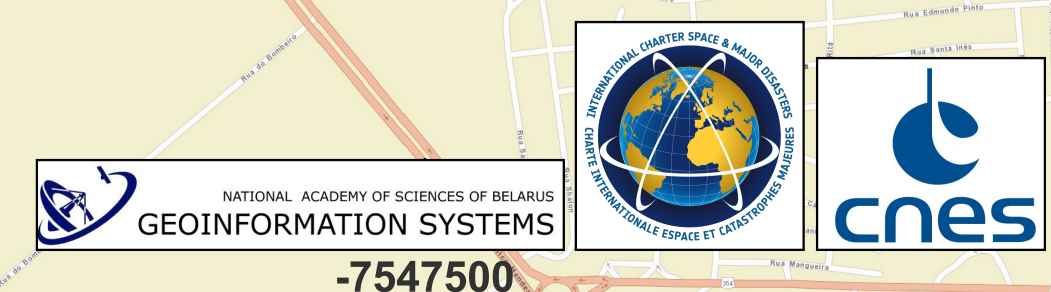


BRAZIL



Flooded buildings, roads and forest, PLEIADES-1A image, 2023-04-06

Map scale for A1 1:14 000



Satellite: PLEIADES-1A
 Imagery date: 06 April 2023
 Resolution: 0.5 m
 Background map: Esri Standard
 Coordinate system: UTM, Zone 19S, WGS-84
 ● flooded buildings
 — flooded roads
 ◊ flooded bridges
 Includes Pleiades material © CNES (2023), Distribution Airbus DS
 Map produced by UE "Geoinformation systems"
 This is a preliminary analysis and has yet not been validated in the field.