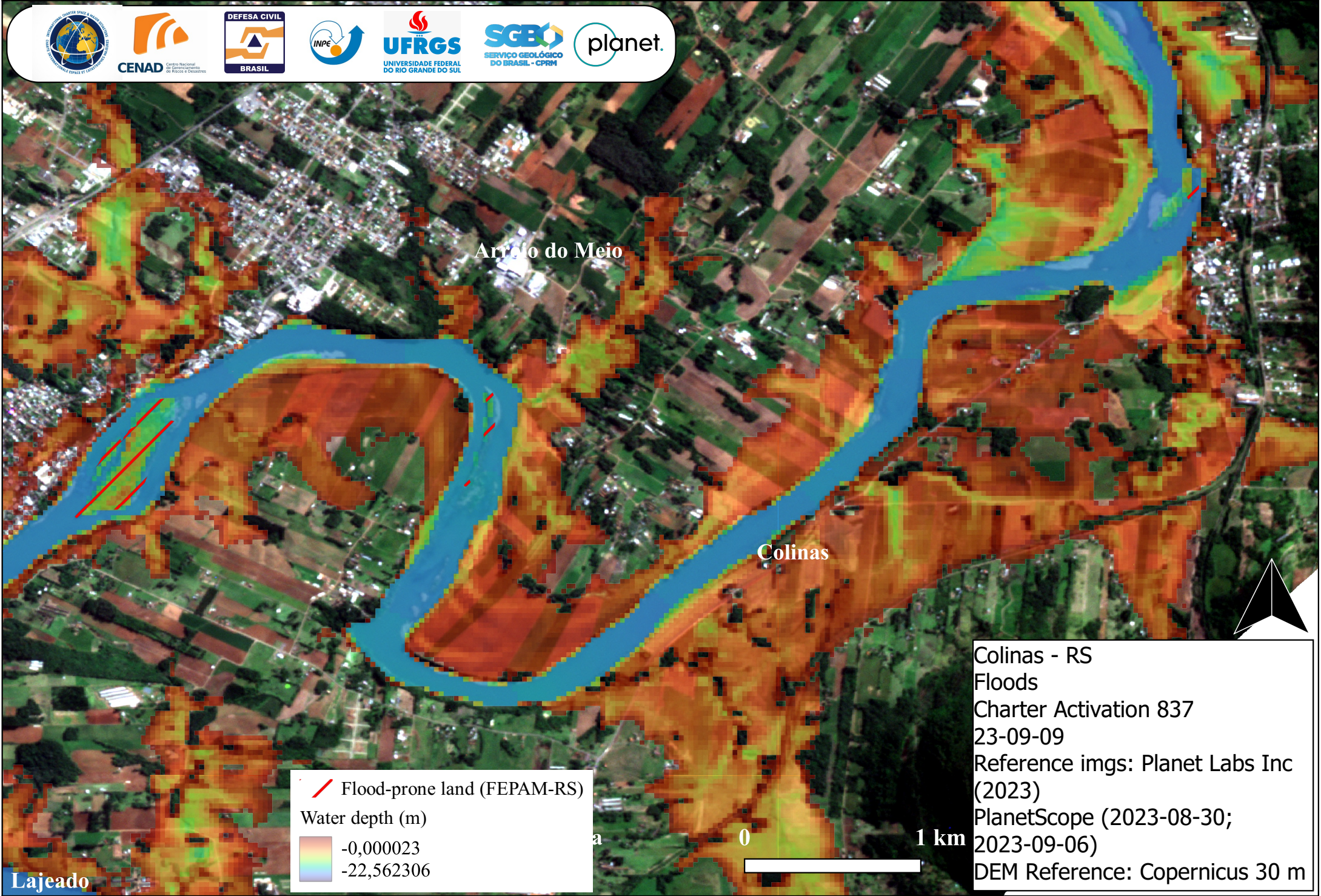


-51.912

-51.870






-29.400



-29.400

-29.425

 Flood-prone land (FEPAM-RS)
 Water depth (m)
 -0,000023
 -22,562306

-29.425

Lajeado

Colinas - RS
 Floods
 Charter Activation 837
 23-09-09
 Reference imgs: Planet Labs Inc (2023)
 PlanetScope (2023-08-30;
 2023-09-06)
 DEM Reference: Copernicus 30 m

-51.912

-51.870