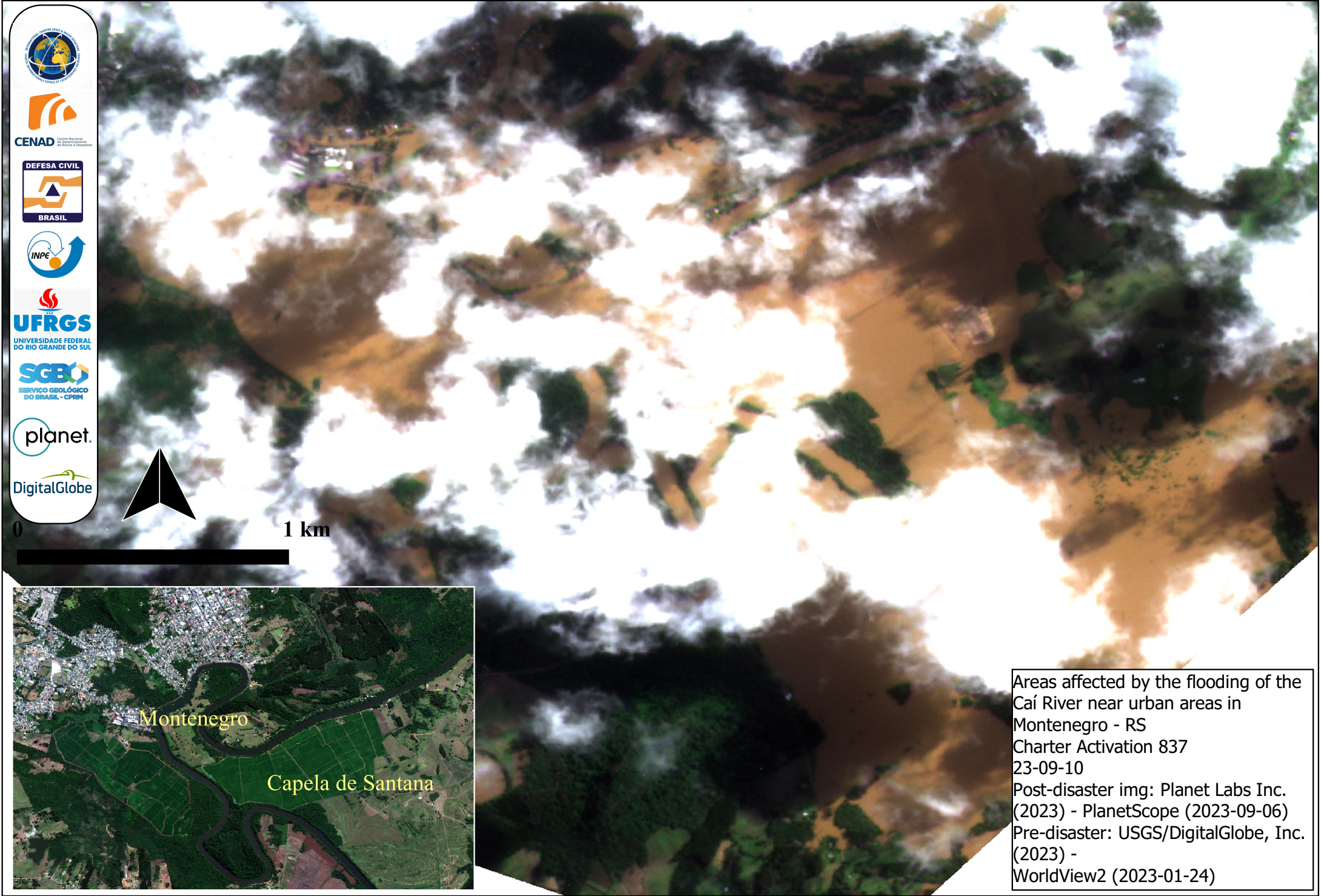


-51.458

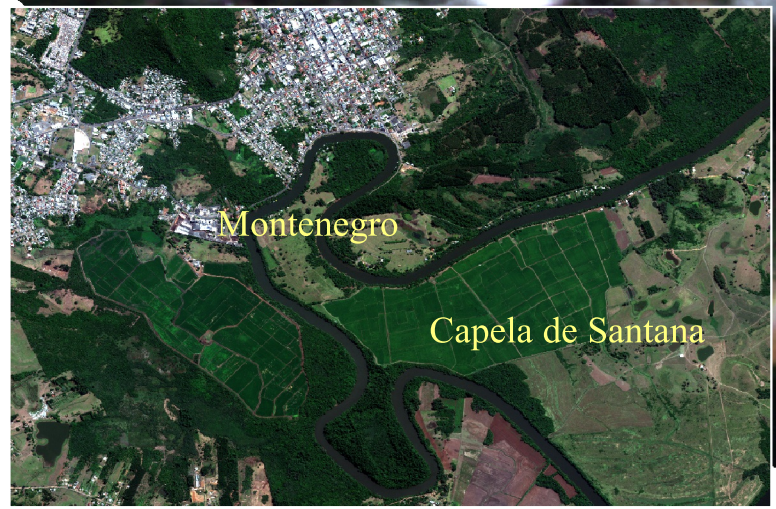
-51.436

-29.700

-29.700




1 km



Areas affected by the flooding of the Caí River near urban areas in Montenegro - RS
 Charter Activation 837
 23-09-10
 Post-disaster img: Planet Labs Inc. (2023) - PlanetScope (2023-09-06)
 Pre-disaster: USGS/DigitalGlobe, Inc. (2023) - WorldView2 (2023-01-24)

-29.720

-29.720

-51.458

-51.436