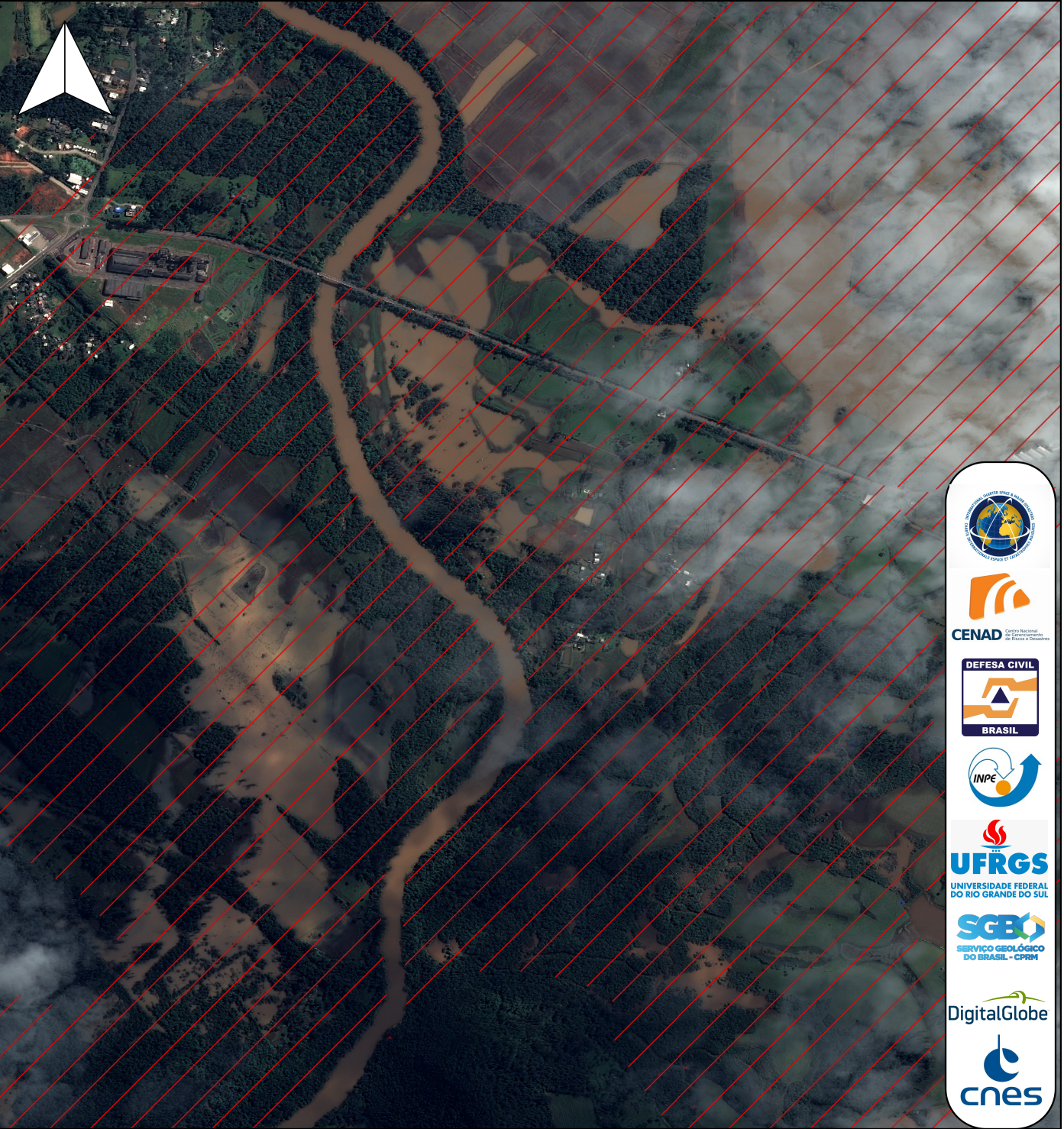
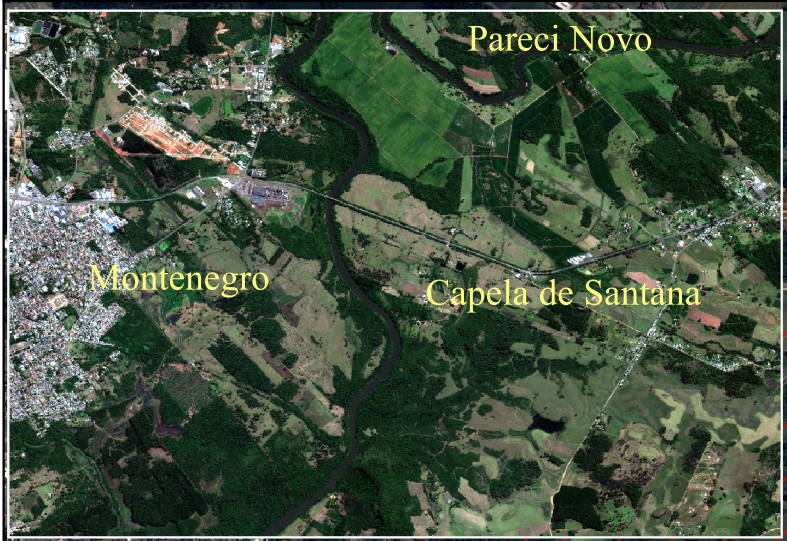



-51.450

-51.425



Flood-prone land and affected areas
in Montenegro and Capela de
Santana -RS
Charter Activation 837
23-09-10
Post-disaster img: HIRI/Pleiades 1A
(2023-09-10)
Pre-disaster: USGS/DigitalGlobe, Inc
(2023)
WorldView2 (2023-01-24)

 Flood-prone land (FEPAM-RS)



-51.450

-51.425

CENAD Centro Nacional de Gerenciamento de Riscos e Desastres

DEFESA CIVIL BRASIL

INPE

UFRGS UNIVERSIDADE FEDERAL DO RIO GRANDE DO SUL

SGB SERVIÇO GEOLÓGICO DO BRASIL - CPRM

DigitalGlobe

CNES

-29.670

-29.685